

Make Your Own Boofle Card

xxx♥

Things you will need:

A4 paper, scissors, printer, glue, and a pen

How to make:

First, gather the things you will need listed above, and make sure your printer has paper in it.

Then, print out the decorations on pages 2-5.

Afterwards, cut out the card insert on page 5 and all of the decorations you want to use on your card design.

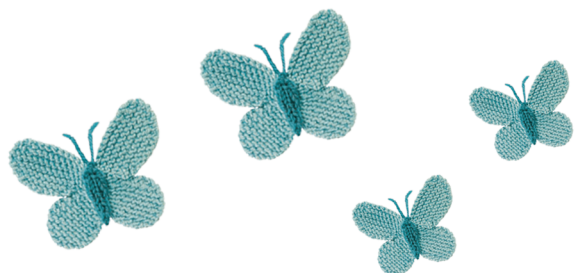
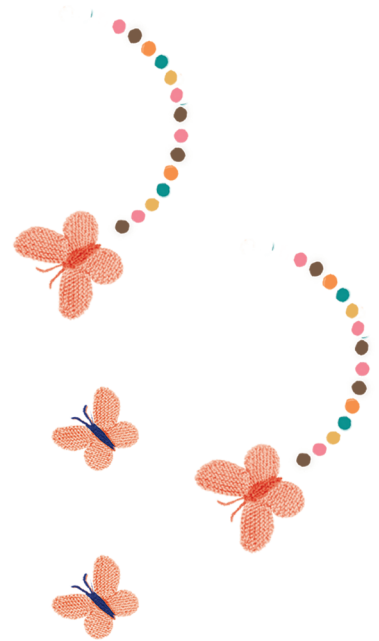
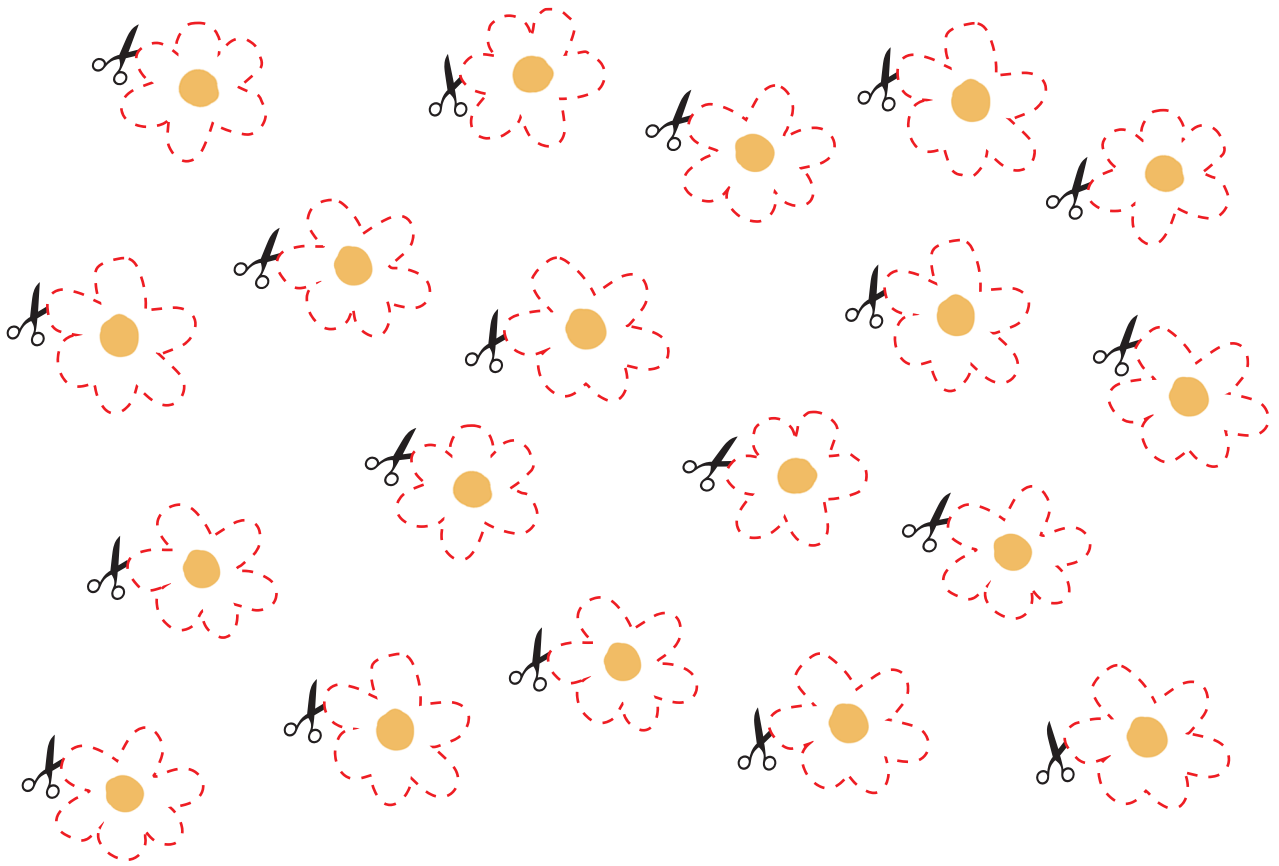
Following that, fold your A4 sheet in half, stick the insert to the inside of your card, and design the front of your card with decorations of your choice!

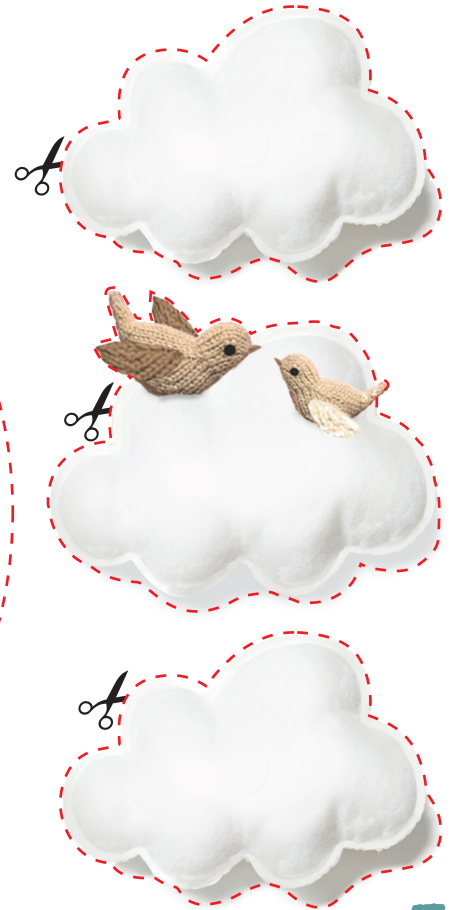
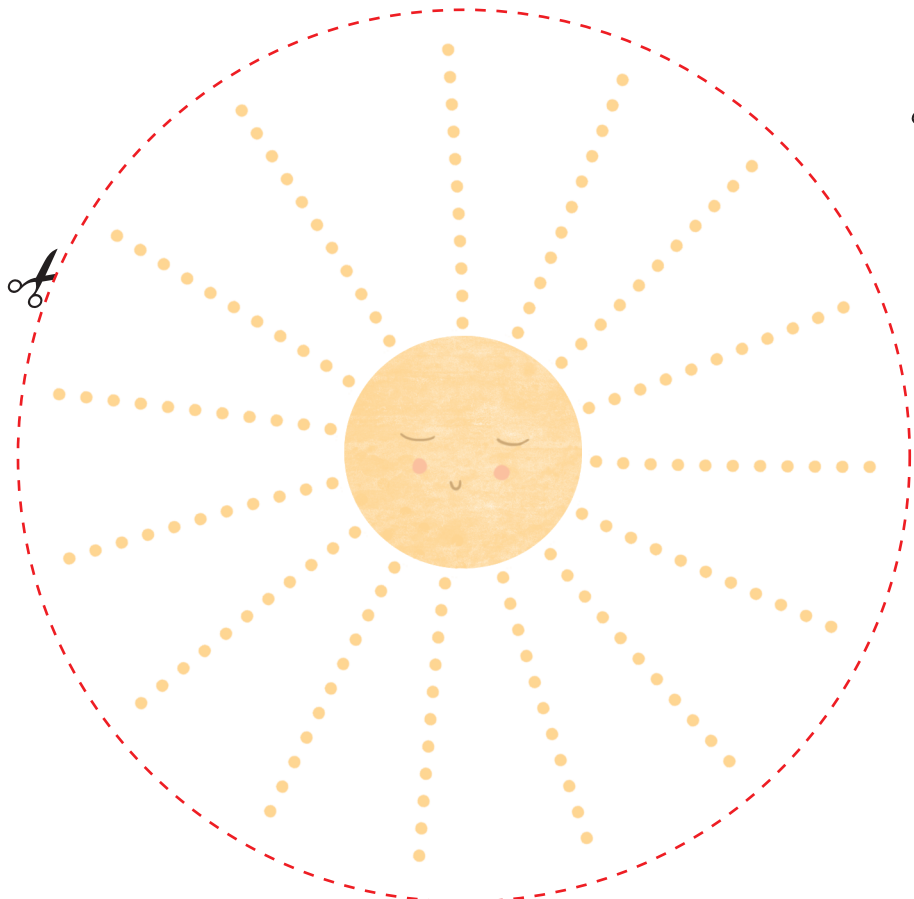
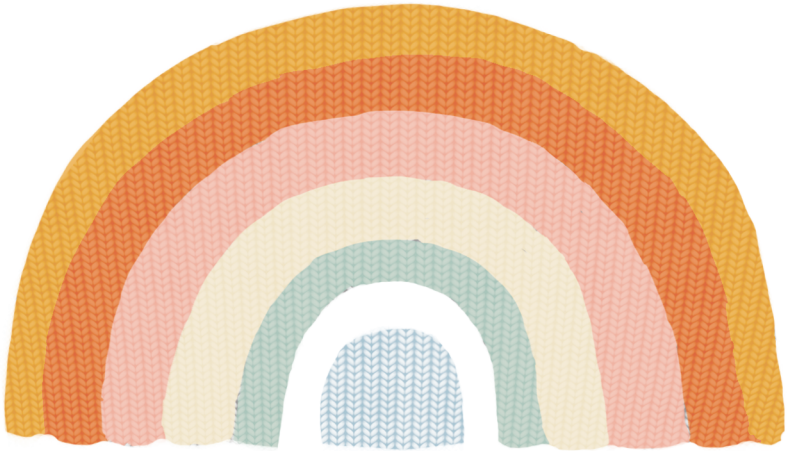
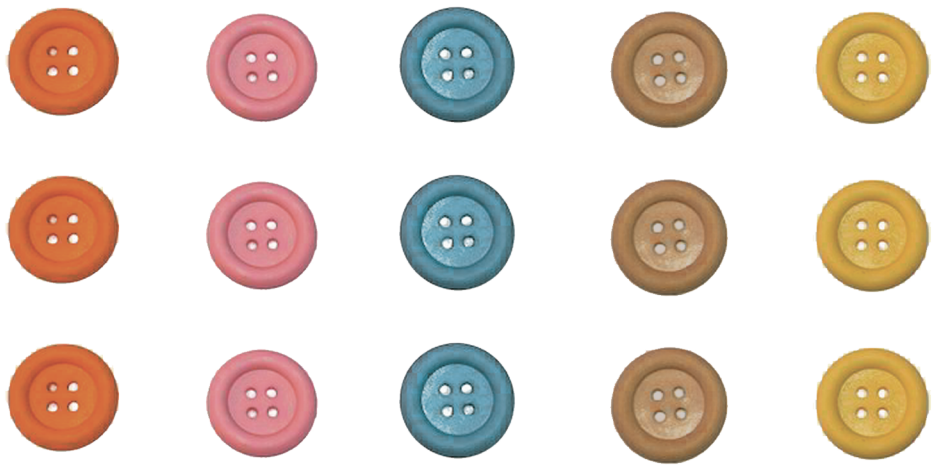
Finally, write a lovely message on the insert of your card for the perfect finishing touch, and send it to someone you love.

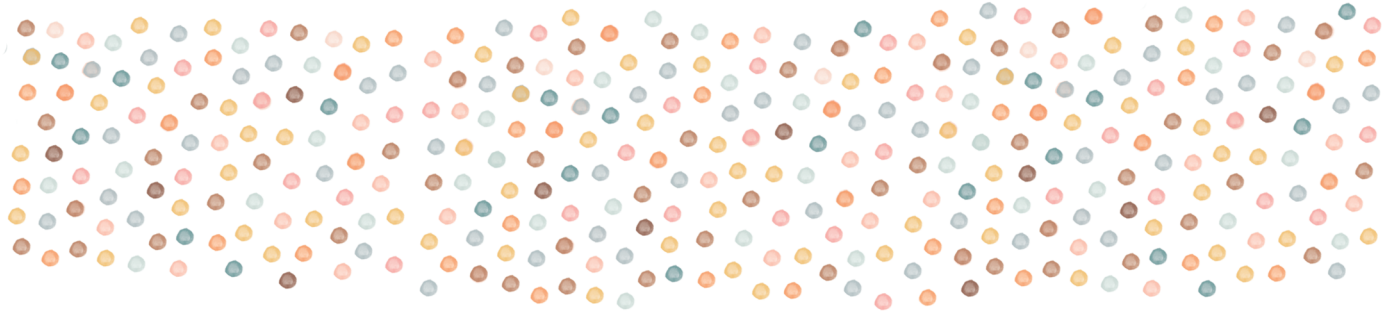


Boofle™
xxx♥

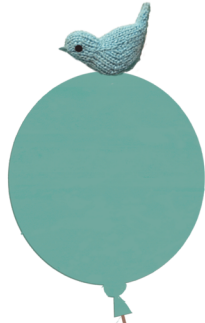
www.boofle.co.uk







Boofle™
xxx♥



4





Card insert

